



## Before You Start

- Need: Extension Cord
- Need: Light or small appliance with plug
- Wipe up any spilled water in and around the sink
- Check to make sure the sink is plugged into a dedicated 20A Circuit



**Do Not Use!**

## STEP 1



Plug the lamp into the wall outlet the sink is plugged into.

If the lamp does not turn on:

- A. Check your bulb.
- B. Try another outlet.
- C. Call a certified electrician to check the outlet.

## STEP 2



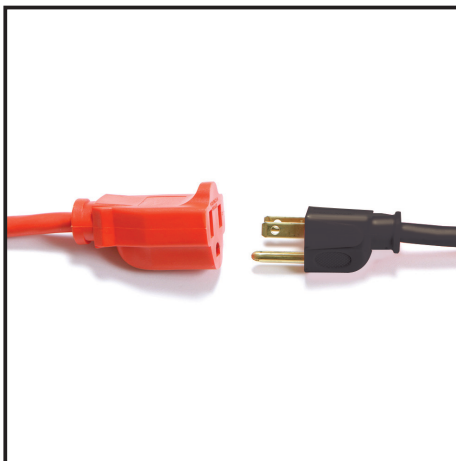
Turn the Sink OFF at the Power Switch inside the cabinet.

## STEP 3



Remove the top plug (Pump Cord) from the Power Switch located inside the sink. (The cord without a yellow dot).

## STEP 4



- A. AFTER confirming wall outlet works, plug the Extension Cord into the working outlet.
- B. Plug the Pump Cord into the Extension Cord.
- C. If Pump is running, disconnect the Pump Cord from the Extension Cord.

## STEP 5



Plug the top plug (Pump Cord) back into the Power Switch located inside the sink.

### If Pump is Running:

The sink is properly operating. Check with a certified electrician that the outlet is a dedicated, grounded 20A circuit breaker. Nothing else can be plugged into the circuit.

### If Pump is NOT Running:

Go to *Electrical Connections HelpGuide 2.2*



**WARNING** Turn the Sink OFF. Unplug the sink from the wall outlet before performing Steps 6-7.

## STEP 6

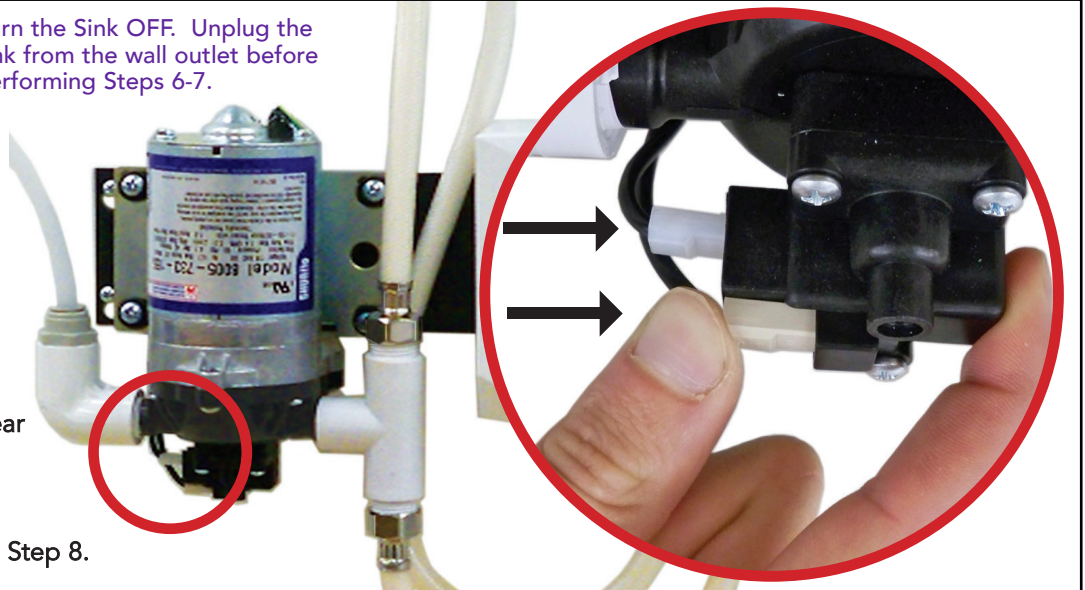
Locate the plastic cord connectors at the bottom of the pump. (See Image)

## STEP 7

Push both plastic cord connectors in. If the connectors weren't connected, you should hear a distinct snap.

## REPEAT STEPS 3-5

If Pump does not run continue to Step 8.



**Sink MUST BE plugged into working wall outlet for these steps.**

## STEP 8



Turn the Sink Off. Remove Both Plugs from Power Switch located inside sink cabinet.

## STEP 9



Power Switch Must be ON for this step to work.

Use a non-metal object and firmly push the RESET Button on the GFCI Outlet.

## STEP 10

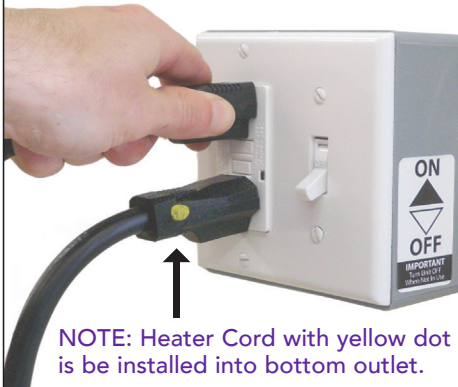


With Power Switch in OFF Position and both plugs disconnected, plug Lamp into Power Switch. Turn Power Switch ON.

IF Lamp turns on, the Power Switch is working correctly.

## STEP 11

Plug Heater and Pump Cord back into Power Switch inside cabinet.



**NOTE:** Heater Cord with yellow dot is be installed into bottom outlet.

Finish Setting-Up your Sink by following your Owner's Manual. Your Sink Should be Operational.

If you are still having problems with your sink:

1. Check with a certified electrician that the outlet is a dedicated, grounded 20A circuit breaker. Nothing else can be plugged into the circuit for the sink to operate correctly.